

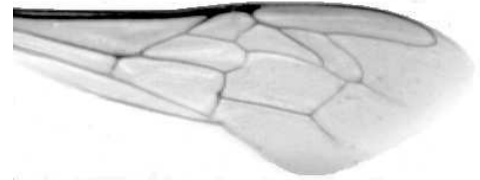


**Bee Research Institute Dol, Ltd.,
CZ 252 66 Libčice nad Vltavou, Czech Republic**

☎ 00420.220940480, fax 00420.220941252

RESULTS OF MORPHOMETRICAL ANALYSIS AND TAXONOMICAL CLASSIFICATION OF BEES BY WING CHARACTERS

Used method: name: **DAWINO**
number: **SOP MO- 01- KR**



Sample No: **K7789**
Race-declared: **CARNICA**

Beekeeper: P. Keri
Address: VÚVč Dol, 25266 Libčice nad Vltavou

Sample - collected by: včelař
- date of collection: 04.10.2016
- way of collection: living

Queen: DOL160007 in colony: 4
Parents: mother of queen: DOL150013 drones: DOL143211
Way of mating: ins
Comments:

Date of wings' measurement: . . .

Analysis made by: RNDr. František Kašpar
Research Institute of Apiculture Dol, Ltd.
Bee Breeding Station
Pekařov
CZ 78823 Jindřichov na Moravě
Czech Republic

DAWINO results - sample classification:

RACE	%
CARNICA	70
Others	30

Results are referred only to analysed sample.

*This protocol cannot be reproduced in
different way as a complete without
agreement of the testing laboratory.*

19.07.2017

Date / stemp / sign

Wing characters (averages) of the sample No: **K7789**

ANGLES (degrees)	
A1	26,5
A4	27,9
B3	70,6
B4	109,6
D7	92,8
E9	20,6
G7	24,9
G18	91,7
H12	16,7
J10	51,2
J16	101,1
K19	75,3
L13	13,2
M17	46,7
N23	93,1
O26	38,4
Q21	35,7
LENGTHS (mm)	
Radiální pole	3,533
A	0,629
B	0,221
C	0,939
D	2,062
Vnitřní délka	4,642
Vnitřní šířka	2,096
Disk.odch. (mm)	0,206
(stupně)	6,8
INDEXES	
Loketní	2,88
Prekubitální	2,87
Činkový	1,11
Radiální	1,46
AREA OF 6 FIELDS	
Plocha (mm ²)	5,440